

## Powerful Mainstream Solution with High Speed AC1300 Wave 2 for Modern Business

*CAP1300*

*2 x 2 AC1300 Wave 2 Dual-Band Ceiling-Mount PoE Access Point*



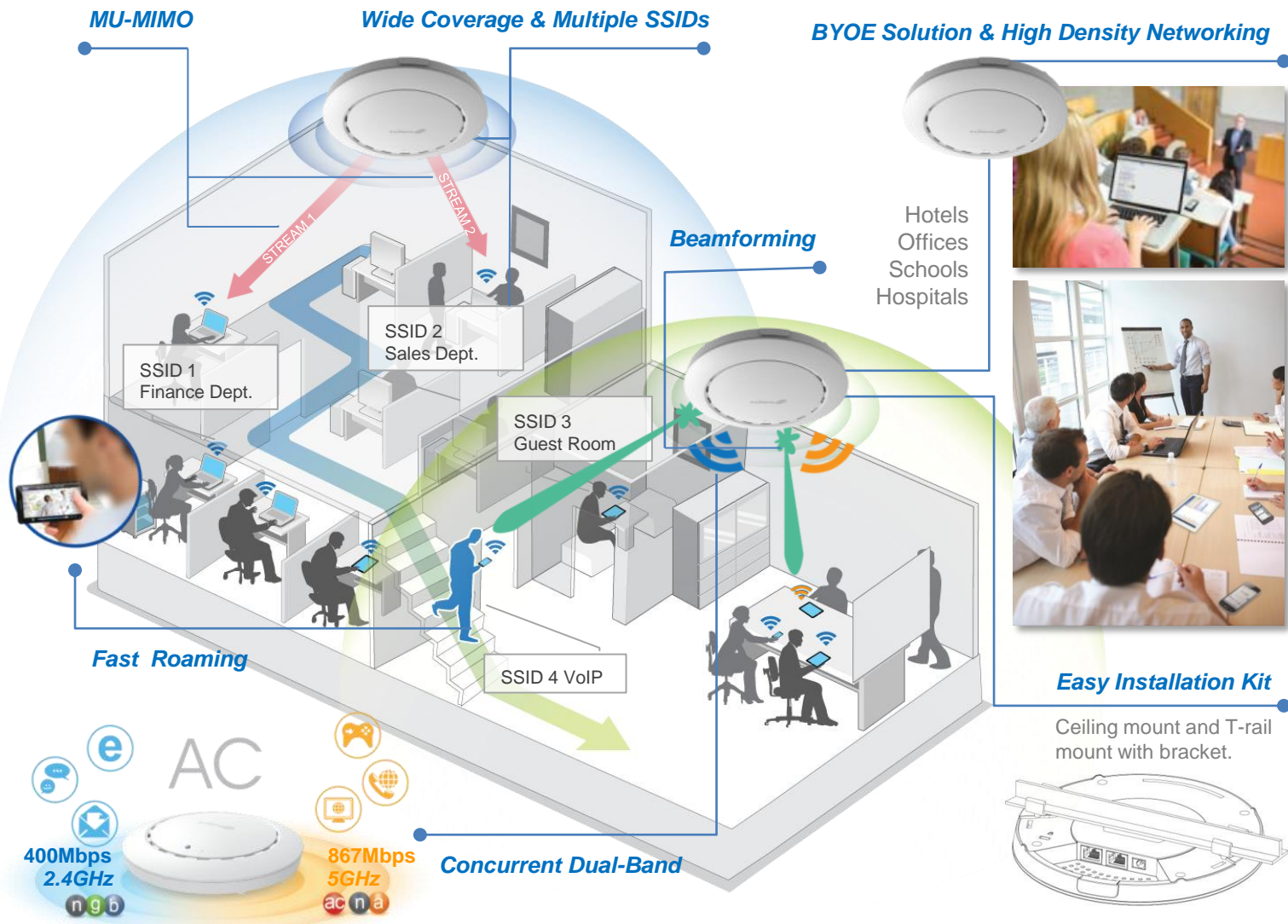
### KEY FEATURES

- **802.11ac Wave 2 High Speed Dual-Band:** IEEE 802.11ac concurrent dual-band with 1300Mbps (2.4GHz at 400Mbps and 5GHz at 867Mbps) wireless speed.
- **Efficient MU-MIMO:** Serves multiple devices simultaneously to enhance connected devices capacity.
- **High Performance Wi-Fi:** Beamforming improves Wi-Fi performance with targeted, directional signals for better range and reliability. AirTime Fairness (ATF) optimizes the Wi-Fi speed among each clients and eliminates Wi-Fi lag. Band steering balances channel utilization, enabling high capacity environment .
- **Compact & Durable Housing:** Ultra slim design with UL94-5VB flame-retardant plastic housing
- **Designed for High Density Usage:** Supports up to two hundred users simultaneously (one hundred users per band), ideal for crowded environments and BYOE (Bring Your Own Everything) workplace Wi-Fi connection.
- **Multiple SSIDs for Security Management:** Supports up to 32 SSIDs (16 x 2.4GHz & 16 x 5GHz) ideal for multiple departments, user groups, customers or guests.
- **802.11r/k Fast Roaming:** Roams smoothly between APs without lag or interruption, ensuring top performance for video and voice streaming applications.
- **Wide Coverage & High Sensitivity:** Adjustable RF output power and high receiver sensitivity for wide coverage across large spaces.
- **Power over Ethernet:** Supports IEEE 802.3af PoE as well as included power adapter.
- **Built-In RADIUS Server:** With management for up to 256 user accounts.
- **Business Environments:** Advanced choice for high-performance applications. Suitable for a wide range of commercial applications such as offices, hotels, meeting rooms, schools, campuses, resorts, retail and others.
- **Central Management:** Edimax Pro Network Management Suite (NMS) and SKYMANAGE PC for easy and Intuitive web-based central management. AP built-in with NMS supports AP array architecture.

The CAP1300 is a powerful wireless solution designed to meet the needs of modern mainstream businesses with the latest IEEE 802.11ac Wave 2 technology for dual-band wireless speeds up to 1300Mbps. Featuring with MU-MIMO (Multiple User – Multiple In Multiple Out) enhanced devices capacity and Beamforming, AirTime Fairness, Band Steering improved Wi-Fi range, reliability and performance. Industrial-grade performance and build quality combined with user-friendly operation, super-fast wireless speed, an extensive feature set and a practical, ceiling-mount design make an ideal solution for enterprise environments.

For businesses that demand security, flexibility and speed – the Edimax Pro series has a wide range of potential applications from office environments to schools, campuses, hotels and hospitals. High-density capacity for up to 200 simultaneous users, is ideal for BYOE workplaces or other environments with a high volume of users and wireless devices. Multiple SSIDs can be configured for different departments or user groups and a built-in RADIUS server provides additional verification with a scalable AP array architecture for central management of multiple access points. 802.11r/k Fast Roaming for seamless transitions between access points, Power over Ethernet support (PoE) and an intuitive web-based management interface provides flexibility for deployment and extensive management options for company MIS departments and network administrators.

When performance and security are critical for your business, you need products that are engineered for your industry. The Edimax Pro series is designed to help your business and provide the connectivity that you rely on every day, with safety and effectiveness guaranteed.

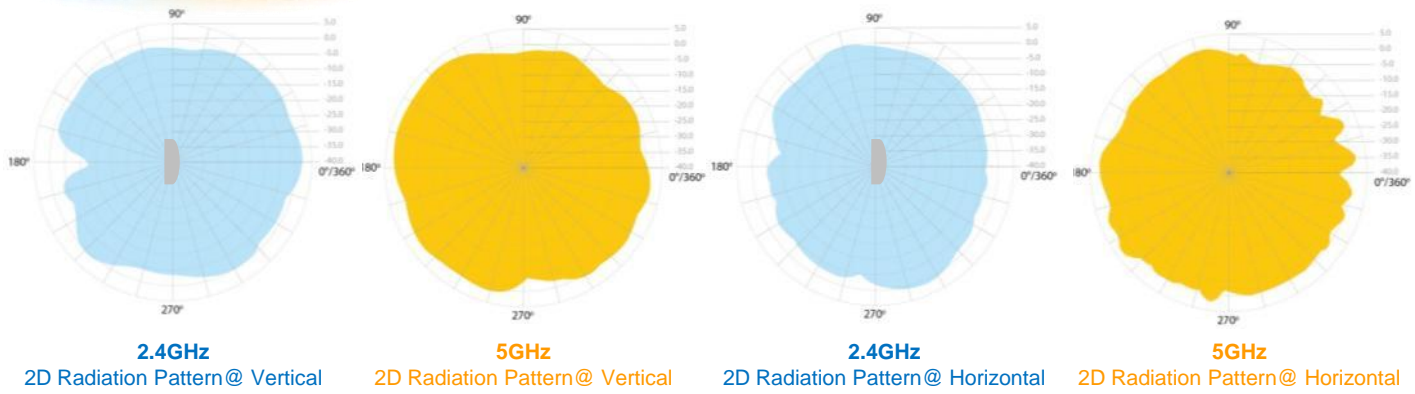
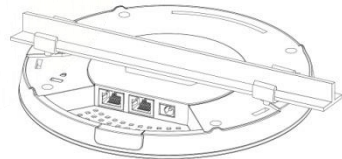


Hotels  
Offices  
Schools  
Hospitals



**Easy Installation Kit**

Ceiling mount and T-rail mount with bracket.



**Central Network Management: NMS & SKYMANAGE PC**

Work with Edimax Pro NMS (Network Management Suite) \* and SKYMANAGE PC\* web-based wireless network management software. Company MIS administrators can plan and manage Edimax Pro access points' powerful functionality according to their office space using an easy, remote web-based interface which includes a dashboard, map view, traffic statistics and wireless client list for network-wide remote administration. RADIUS settings, WLAN group settings, access control, guest network settings and firmware upgrades can all be managed centrally from a single location to reduce network downtime, aid troubleshooting and optimize network performance. Graphical zone plans with Google Maps integration and setup wizards are also available for expanding and managing large networks with multiple access points, with custom floor plans, visual overviews and easy drag-and-drop icons for quick access to key performance and monitoring information.

\*NMS is built-in with Edimax Pro CAP, WAP series & OAP1750 access point. For SKYMANAGE PC, please contact Edimax authorized distributors or SIs to download the software.

# 2 x 2 AC1300 Wave 2 Dual-Band Ceiling-Mount PoE Access Point

## SPECIFICATIONS

Hardware	
LAN Interface	Giga x 2
PoE	LAN1: PoE in
Antenna	Type: 4 x Built-In PIFA (2 x 2.4GHz, 2 x 5GHz) / Gain: 4dBi (2.4GHz), 5dBi (5GHz) Max.
Power	DC: 12V / 1A 802.3af (PoE Injector Optional)
Dimensions (L x W x H)	17.6 (D) x 3.2 (H) cm
Weight	342g
Power Consumption (Full Loading)	11W
Mounting	Ceiling
Reset	Reset
LED Indicator	1. Power LED 2. Diag LED
Environmental Conditions	Operating Temperature: 0°C (32°F) to 40°C (104°F) Operating Humidity: 90% or Less
Power Saving	802.3az
Internal Buzzer	Y
Housing	UL94-5VB Flammability Rating
Others	Kensington Security Slot & Ceiling/Wall Mount Holes
Wireless	
Standard	802.11 a/b/g/n/ac Concurrent Dual-Band
No. of Radios	2
Receiver Sensitivity	≤ -93Bm
Certification	CE/FCC
802.11 r/k	Y
Fast Roaming	Y
Band Steering	Y
AirTime Fairness	Y
Beamforming	Y
Number of SSIDs	16 (2.4GHz) + 16 (5GHz)
Performance	
Maximum Data Speed	400 + 867Mbps
Concurrent Clients	Up to 100 Per Radio
Security	
Encryption	WEP / WPA / WPA2
Wireless L2 Isolation	Y
Station Isolation	Y
IEEE 802.1x Authenticator	Y
EAP Authentication	PEAP
Hidden SSID	Y
MAC Address Filter	Y
Wireless STA	Y
Rogue AP Detection (w/ NMS)	Y
Software	
Wireless Mode	AP / WDS AP / WDS Bridge / Client
802.1q VLAN	Y (VID = 1-4095)
Spanning Tree	RSTP
QoS	WMM (802.11e) Max Associated Station No.
Pass-Through	IPv6 and VPN (PPTP, L2TP/IPsec)
DSCP (802.1p)	Y
Multicast Rate up to 54Mbps	Y

RF Specifications		
Frequency Band	•Radio I : 802.11b/g/n 2.412~2.484(GHz) •Radio II : 802.11a/n/ac 5.18~5.24(GHz), 5.745~5.825(GHz) (The supported frequency band is restricted by local regulations.)	
Operation Channels	•2.4GHz : US/Canada 1-11; 2.412~2.462GHz Europe 1-13; 2.412~2.472GHz Japan 1-14; 2.412~2.484GHz •5GHz : Country dependent for the following ranges: <b>US/Canada:</b> Band 1:36, 40, 44, 48; 5.180~5.240(GHz) Band 2: 52, 56, 60, 64;5.260~5.320(GHz) Band 3: 100, 104, 108, 112, 116, 120, 124, 128, 132, 136, 140;5.500~5700(GHz) Band 4:149, 153, 157, 161, 165; 5.745~5.825(GHz) <b>Europe:</b> Band 1:36, 40, 44, 48; 5.180~5.240(GHz) Band 2: 52, 56, 60, 64;5.260~5.320(GHz) Band 3: 100, 104, 108, 112, 116, 120, 124, 128, 132, 136, 140; 5.500~5700(GHz)	
Transmit Power (CE: 20dBm or lower, FCC: 23dBm or lower)	802.11b 20dBm@1Mbps 20dBm@2Mbps 20dBm@5.5Mbps 20dBm@11Mbps 802.11g 20dBm@6Mbps 20dBm@9Mbps 19dBm@12Mbps 19dBm@18Mbps 18dBm@24Mbps 18dBm@36Mbps 17dBm@48Mbps 17dBm@54Mbps 802.11gn (2.4G) 20dBm@MCS0/8 19dBm@MCS1/9 19dBm@MCS2/10 18dBm@MCS3/11 18dBm@MCS4/12 17dBm@MCS5/13 16dBm@MCS6/14 16dBm@MCS7/15	802.11a 19dBm@6Mbps 19dBm@9Mbps 18dBm@12Mbps 18dBm@18Mbps 17dBm@24Mbps 17dBm@36Mbps 16dBm@48Mbps 16dBm@54Mbps 802.11an(5G) 19dBm@MCS0/8 19dBm@MCS1/9 18dBm@MCS2/10 18dBm@MCS3/11 17dBm@MCS4/12 17dBm@MCS5/13 16dBm@MCS6/14 16dBm@MCS7/15 802.11ac 18dBm@MCS0 18dBm@MCS1 18dBm@MCS2 17dBm@MCS3 17dBm@MCS4 17dBm@MCS5 16dBm@MCS6 16dBm@MCS7 15dBm@MCS8 14dBm@MCS9
Receiver Sensitivity	802.11b ≤-93dBm@1Mbps ≤-85dBm@11Mbps 802.11g ≤-86dBm@6Mbps ≤-70dBm@54Mbps 802.11gn (2.4G) ≤-86dBm@MCS0 ≤-62dBm@MCS8 ≤-57dBm@MCS9	802.11a ≤-85dBm@6Mbp ≤-68dBm@54Mbps 802.11an(5G) ≤-85dBm@MCS0 ≤-64dBm@MCS7 802.11ac ≤ -85dBm@MCS0 ≤ -61dBm@MCS8 ≤ -54dBm@MCS9
Management		
Deployment	<b>Standalone (AP mode)</b>	
	<b>Master AP mode:</b> Can manage 16 Edimax Pro APs with NMS <b>Managed AP mode:</b> Be managed by AP Controller (APC500), Edimax Pro Master AP with NMS or SKYMANAGE PC Software	
Configuration	HTTP/HTTPS	
	SNMP v1, v2c, v3	
	CLI (Telnet, SSH)	
RADIUS Server	Built-In	
Auto-Channel	Y	
Private MIB	Y	
Package Contents		
Access Point	AC1300 Ceiling Mount PoE Access Point	
Mounting Bracket	Ceiling-Mount & T-rail Mount Bracket Kit	
Power Adapter	12V / 1A Power Adapter	
Cable	Ethernet Cable	
CD / Quick Installation Guide	CD (User Manual & Multi-Language Quick Installation Guide) / Printed English Quick Installation Guide	
Accessories		
Optional	GP-101IT	IEEE802.3at PoE Injector



Maximum performance, actual data rates, and coverage will vary depending on network conditions and environmental factors. Product specifications and design are subject to change without notice. Copyright © 2017 Edimax Technology Co. Ltd. All rights reserved.

www.edimax.com