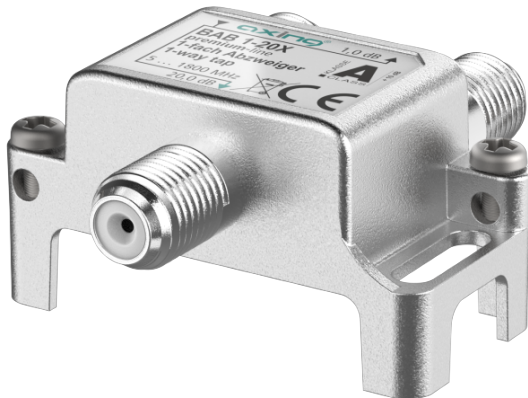


**BAB 1-20X 1-way tap | 20 dB | 5 ... 1800 MHz | housing design 01**


- ✓ Suitable for DOCSIS 3.1 and 4.0
- ✓ Class A (+10 dB) according to EN 50083-2
- ✓ Inputs and outputs hum-suppressed
- ✓ High intermodulation suppression
- ✓ High return loss and isolation
- ✓ Vodafone listed

**Order information**

Type	BAB 1-20X
Order no.	BAB00120X
GTIN	7611682009279
PE	1
VE	1
EU customs tariff number	85291080


**Technical data**

Frequency range	5 ... 1800 MHz
Screening factor acc. to EN 50083-2	Class A + 10 dB
Surge Protection	1 kV @ 1.2/50 µs surge voltage according to IEC 61000-4-5 / 160 Vdc impulse and UM TS 41
Intermodulation ratio (EN 60728-4)	< -115 dBc @ 120 dBµV
Taps	1-fach
Tap loss	20.0 ± 0.5 dB @ 10 MHz 20.0 ± 0.3 dB @ 65 MHz 19.9 ± 0.4 dB @ 108 MHz 19.9 ± 0.5 dB @ 204 MHz 19.8 ± 0.5 dB @ 258 MHz 19.8 ± 0.6 dB @ 470 MHz 19.8 ± 0.6 dB @ 862 MHz 20.0 ± 0.7 dB @ 1218 MHz 20.0 ± 0.8 dB @ 1794 MHz
Through loss	0.7 ± 0.3 dB @ 10 MHz 0.4 ± 0.3 dB @ 65 MHz 0.4 ± 0.3 dB @ 108 MHz 0.4 ± 0.4 dB @ 204 MHz 0.4 ± 0.4 dB @ 258 MHz 0.4 ± 0.4 dB @ 470 MHz 0.7 ± 0.5 dB @ 862 MHz 0.8 ± 0.7 dB @ 1218 MHz 1.2 ± 0.7 dB @ 1794 MHz
<b>RF connectors</b>	
Type	F-Buchse (IEC 61169-24)
Isolation	
Tap-Out	> 38 dB @ 10 ... 204 MHz > 35 dB @ 204 ... 862 MHz > 34 dB @ 862 ... 1218 MHz > 30 dB @ 1218 ... 1794 MHz
<b>Connectors</b>	
Connector type	F female (IEC 61169-24)
Impedance	75 Ohm
Return loss	> 22 dB @ 10 ... 204 MHz > 21 dB @ 204 ... 862 MHz > 19 dB @ 862 ... 1218 MHz > 17 dB @ 1218 ... 1794 MHz
<b>General</b>	
Operating temperature range	-15 °C ... +60 °C
Dimensions (W × H × D) appr.	45 × 55 × 25 mm
IP code	IP67