

# Ethernet over Coax Peer-to-Peer – building digitization at 720 Mbps

## EOC 1-31 | Ethernet over Coax | 720 Mbps

- ✓ Peer-to-Peer
- ✓ Transmission range 5...65 MHz
- ✓ Net data rate 720 Mbps (PHY)
- ✓ 128 bit-AES-Encryption
- ✓ 2 x RJ 45 Connectors
- ✓ Incl. external switching power supply

## EOC 2-31 | Ethernet over Coax | WiFi

- ✓ Same as EOC 1-31
- ✓ WiFi for Tablet, Smartphone, Notebook etc.
- ✓ 2,4/5 GHz Band



### Available devices:

- EoC 1-31 | Ethernet over Coax
- EoC 2-31 | Ethernet over Coax | WiFi

### Accessories:

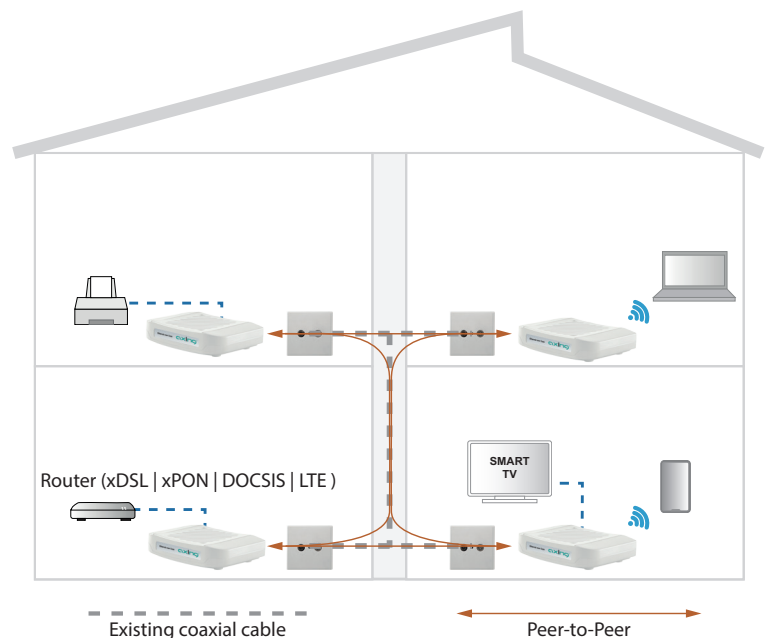
- TZU 40-03/04 | EoC inserter
- TZU 19-65/66 | High-pass filter | return path blocker
- TZU 198-64 | EoC low-pass filter 5 ... 65 MHz

## Ethernet over Coax - as easy as a switch!

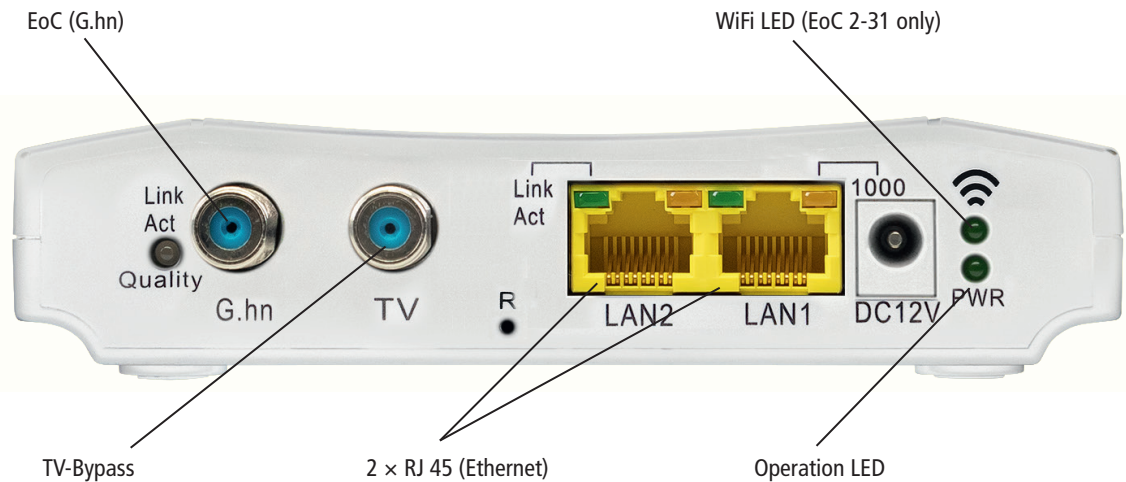
The EoC devices use the G.hn standard to set up an encrypted Ethernet-over-Coax network via the coaxial cable of the TV cabling (TV and radio will of course continue to be transmitted). This EoC network acts like a large switch (in the example with 8 ports) distributed throughout the whole house.

Two Ethernet-capable devices (PCs, notebooks, servers, printers, smart TVs, etc.) can be connected to each EoC device. Additionally the EoC 2-31 is equipped with WiFi. Typical scenarios can be residential buildings with SAT television, lawyers' offices, medical practices or offices where LAN wiring is not possible/desired.

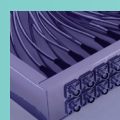
The types EOC 1-31 and EOC 2-31 are downward compatible to the devices of the 2nd generation EOC 1-11 and EOC 2-11, because they use the same return channel range from 5 to 65 MHz. With a net data rate of 720 Mbps (PHY) you can achieve a high data throughput.



## Rear side



Type	EoC 1-31	EoC 2-31
Frequency range		5...1218 MHz
Frequency range transmission		5...65 MHz
Frequency range TV bypass		258...1218 MHz
Maximum allowed attenuation in coaxial network		77 dB
Transmission level in coaxial network		113 dB $\mu$ V $\pm$ 1dB
<b>EoC</b>		
Standard	ITU-T G.9960/G.9961 G.hn over Coax	
Net data rate (PHY)	720 Mbps	
Encryption	AES 128 Bit	
Max. number of devices in EoC network	16	
Connectors (G.hn   TV)	2 x F-female	
<b>Interfaces</b>		
Ethernet connectors (LAN)	2 x RJ 45	
Ethernet standards	IEEE 802.3u 100BaseT Fast Ethernet, IEEE 802.3ab 1000BaseT Gigabit Ethernet	
WiFi standard	-	MIMO 2x2 IEEE 802.11b/g/n/a/ac
WiFi encryption	-	WEP, WPA/WPA2, WPA/WPA2 m. PSK
<b>General</b>		
Operating voltage	12 VDC	
Power consumption	4 W	8 W
Operating temperature range	0°C...40°C	
Dimensions (W x H x D) appr.	130 x 95 x 32 mm	
<b>External accessories</b>		
Switching power supply	100...240 V~/50...60 Hz   12 V=/0.5 A	100...240 V~/50...60 Hz   12 V=/1 A



AXING AG

Gewerbehaus Moskau

Phone +41 52 - 742 83 00

Fax +41 52 - 742 83 19

 8262 Ramsen

info@axing.com

www.axing.com